

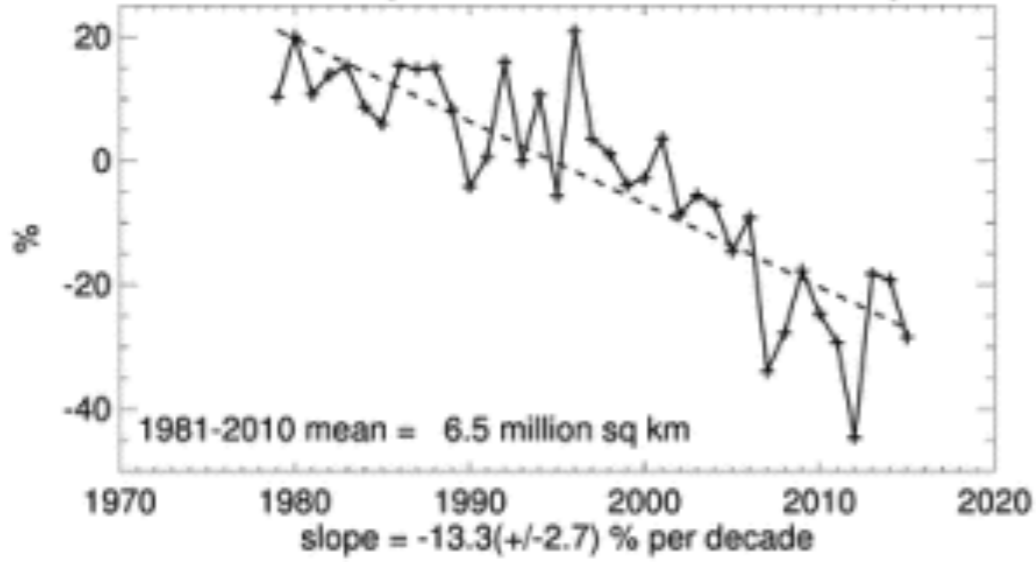
A photograph of an Arctic landscape. In the foreground, there is a field of broken, white sea ice floes. In the middle ground, a calm, light blue body of water stretches across the frame. In the background, there are snow-covered mountains under a clear blue sky with a few wispy clouds.

Alice Bradley

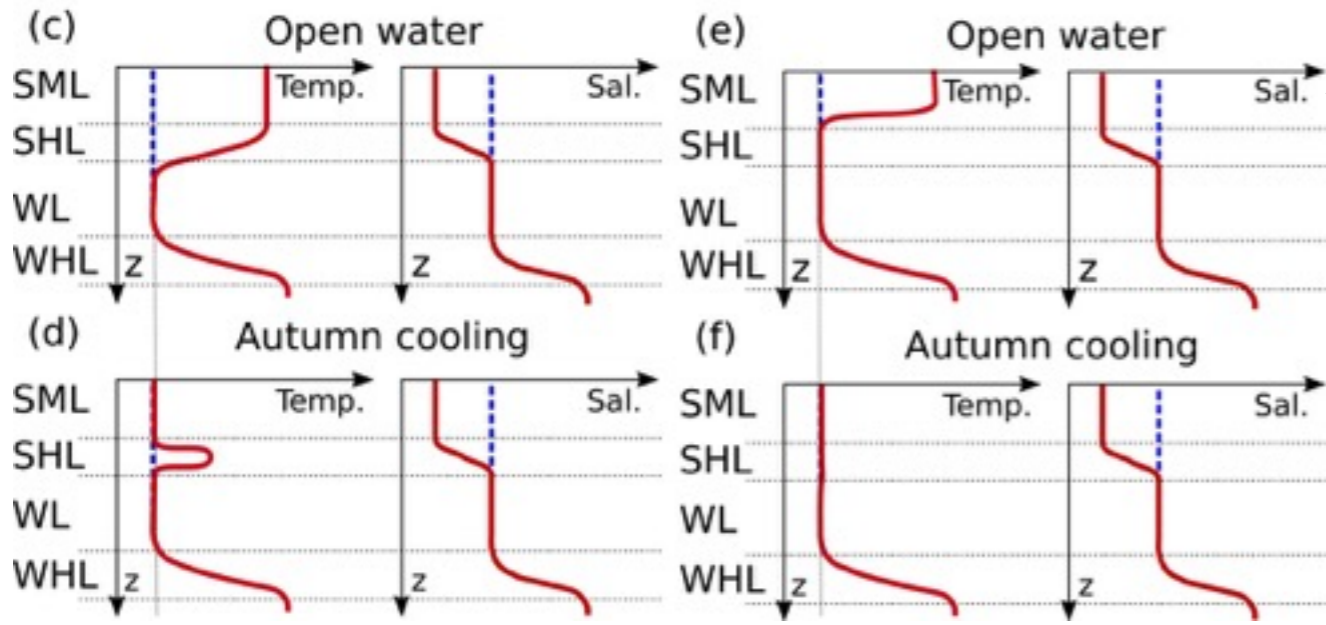
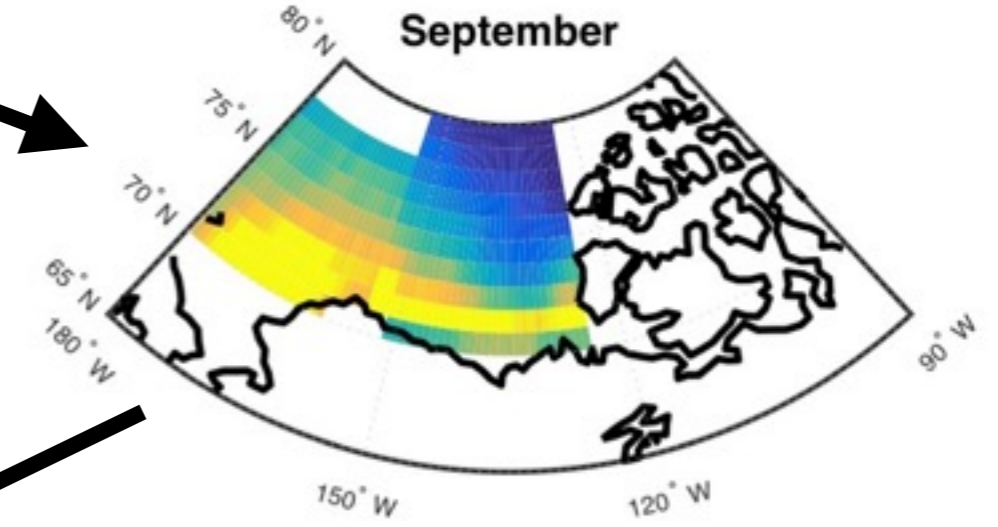
- PhD(-ish) in Aerospace engineering at University of Colorado Boulder
- Research in sea ice growth in the Arctic
- Loves cross-country skiing and acro-yoga



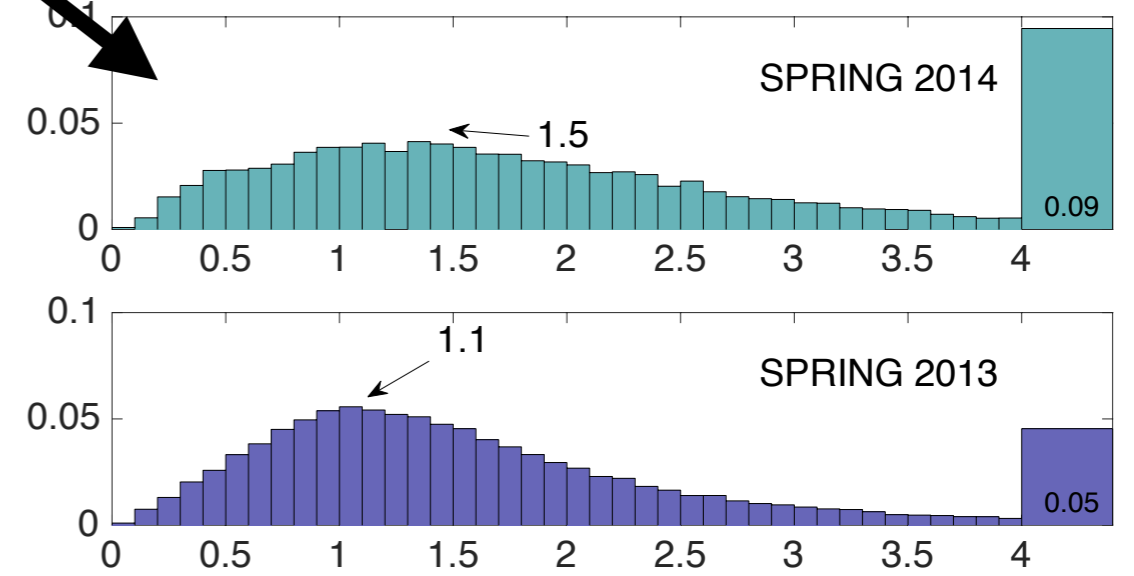
Northern Hemisphere Extent Anomalies Sep 2015



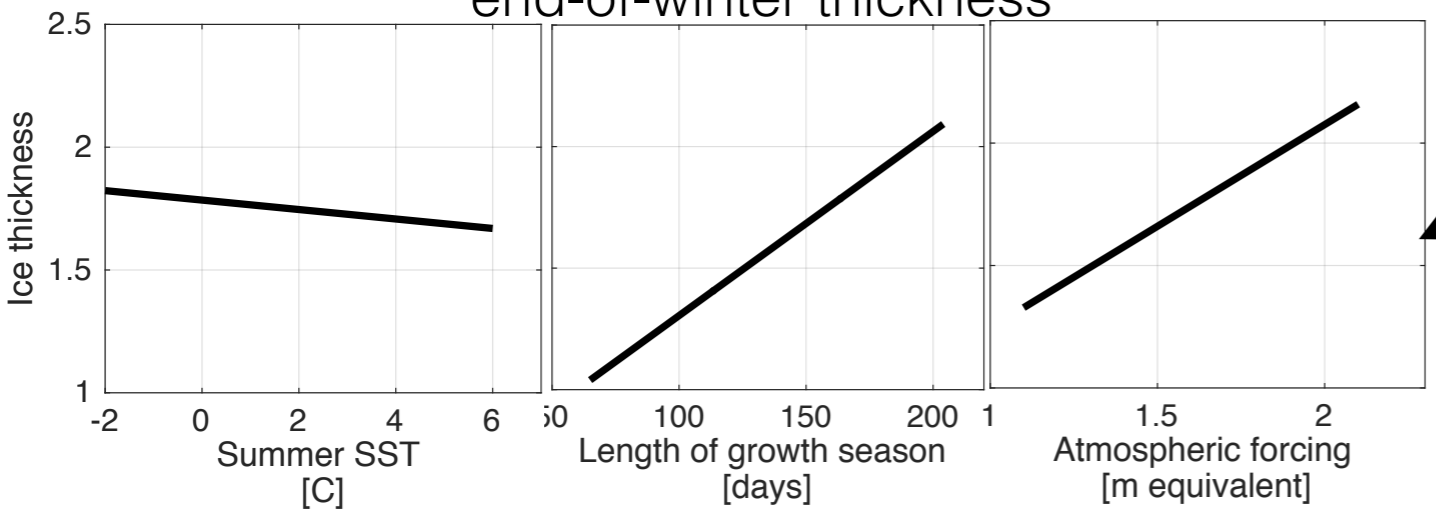
Trend in upper ocean heat content



Ice thickness distribution

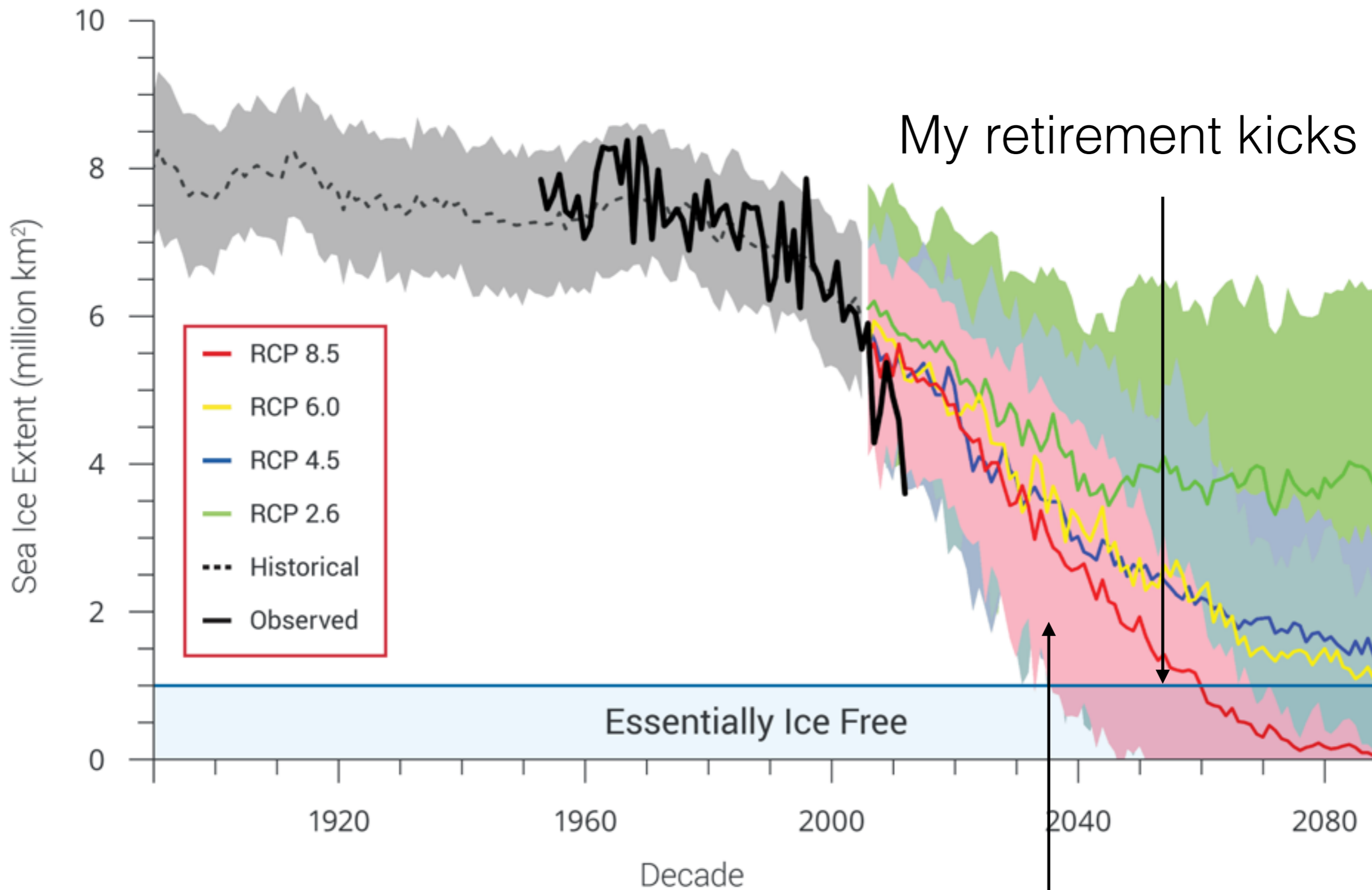


Effect of changing growth season on end-of-winter thickness



Ice thickness [m]

Decline in Arctic Sea Ice Extent





www.apecs.is



Watch the films at
tinyurl.com/hq8qmnh

